



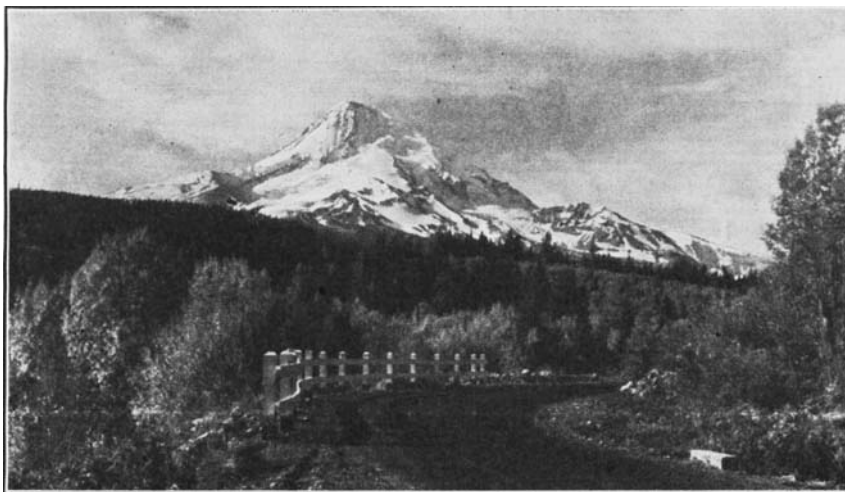
ANTON HOGSTAD, JR.

1935 MEETING OF THE AMERICAN PHARMACEUTICAL ASSOCIATION.

The week of August 5th-10th has been named for the coming eighty-third annual convention of the AMERICAN PHARMACEUTICAL ASSOCIATION to be held in Portland, Ore. Headquarters will be the Multnomah hotel. A. O. Mickelsen is the Local Secretary and inquiries about the convention should be addressed to him, care of the North Pacific College of Pharmacy, Portland, Ore.

This is the first time the A. PH. A. will convene in the Pacific Northwest, but it has met before on the Pacific coast—once in Los Angeles and twice in San Francisco. Since this organization is the mother of all pharmaceutical associations of the country and draws its membership from all branches of pharmacy, it is expected that the coming conventions will draw large delegations from all sections.

The Mt. Hood Loop Highway, which marks a conquest of man, starts from Portland's doors; circles Mt. Hood towering 11,225 feet into the heavens. The



Mt. Hood in Oregon as seen from the Loop Highway which completely encircles the mountain; the round trip of 175 miles from Portland may easily be made in one day. The mountain itself is practically in Portland's front yard, being only 60 miles due east. Permission to use in JOURNAL A. PH. A. by *Sawyer Scenic Photos, Inc.*

world-famed Columbia River Highway starts eastward from the very edge of Portland. It was at Champoeg, a little spot on the Willamette 30 miles above Portland, that a provisional government of the Oregon country under the Stars and Stripes was declared on May 2, 1843. At the mouth of the Columbia River a hundred miles from Portland lies Astoria, the first settlement (1811), in Oregon. A few miles beyond lies Seaside, where Lewis and Clark reached the end of the trail. Just across the Columbia from Portland stand Vancouver Barracks, where General Grant and others of his day served as lieutenants and captains. Monuments, statues and shrines mark these places.

A feature of the convention week is the fact that the Oregon, Washington and Idaho State pharmaceutical associations will hold a big tri-state meeting in Portland on August 5th-6th, and it is expected that many of the delegates to this tri-state meeting will remain to participate in the deliberations of the A. PH. A. group. Further details of these conventions will appear in later issues of THIS JOURNAL.

JOURNAL OF THE AMERICAN PHARMACEUTICAL ASSOCIATION

VOL. XXIV

MARCH, 1935

No. 3

THE CHAIRMAN, NATIONAL PHARMACY WEEK EXECUTIVE COMMITTEE.

Anton Hogstad, Jr., Chairman, National Pharmacy Week Executive Committee was born February 21, 1893, in Neenah, Wisconsin. He graduated from the Philadelphia College of Pharmacy in 1914, being awarded the Clement B. Lowe Materia Medica Prize and the Henry Kraemer Microscopical Prize. Following graduation he remained at his Alma Mater for a period of two years in the Department of Botany and Pharmacognosy, after which he became associated with the former H. K. Mulford Company, in charge of the Hay Fever Department at the Glenolden Laboratories.

In 1917 he was called to the South Dakota State College Division of Pharmacy where he remained for a period of eight years, during which time he inaugurated the Medicinal and Poisonous Plant Garden, as well as engaging in an extensive piece of research involving the origin, physiological rôle and production of Oil of American Wormseed. During 1925-1926 he was the D. F. Jones Fellow in the Biochemical Division, University of Minnesota, continuing his studies in Biochemistry, Colloidal Chemistry and likewise Pharmacology.

In 1926 he was chosen to succeed the late Dr. Henry M. Whelpley as professor of Physiology and Materia Medica at the St. Louis College of Pharmacy, and was at that time appointed Pharmacognosist to the Missouri Botanical Garden, at which institution he inaugurated and developed their present medicinal plant garden.

Five years later he entered the retail field, establishing a well-known prescription shop in St. Louis which experienced an unprecedented success, the success of same being due in a large measure to the unusual methods adopted in rendering members of allied professions a distinct type of professional service.

On January 1, 1931, he became associated with Merck & Co., Inc., in the capacity of Special Assistant to the President, with instructions to render American Pharmacy every assistance possible. Upon the death of the late Dr. Robert J. Ruth, Mr. Hogstad was appointed chairman of the National Pharmacy Week

Executive Committee. During the course of the past four years he has traveled extensively, lecturing at Colleges of Pharmacy, local, state and national gatherings throughout the United States and Canada, as well as assisting retail pharmacists by rendering a distinct type of personal service.

On June 30, 1920, Mr. Hogstad was married to Ebba Henrietta Nesseseth at Menomonie, Wisconsin; they have four children. Mr. Hogstad is keenly interested in the native medicinal plants. He is the founder of the St. Louis Wild Flower Club. He is also vitally interested in Colloidal Chemistry. For four years he addressed the St. Louis Colloidal Medical Club monthly on Colloidal Chemistry in relation to Medicine.

PRELIMINARY NOTICE FROM THE COMMITTEE ON TRANSPORTATION.

Members attending the meeting of the AMERICAN PHARMACEUTICAL ASSOCIATION in Portland, Oregon, August 5th-10th, will have an opportunity to visit the great west at moderate expense and under unusually favorable conditions. The Committee on Transportation is working with the railroads and steamboat companies to the end that members will be able to take advantage of very low summer excursion rates to the coast which will allow a wide choice of routes, going out by any one of many routes and returning by any other, including the whole length of California, Oregon and Washington, either from the north or the south.

In making arrangements for transportation, the Committee is endeavoring to leave the widest possible latitude of choice to the members, who may stop over at the Grand Canyon, or Yellowstone Park, or any of several other places; and several tours to Alaska will be available at the end of the meeting. Professor Gathercoal, the Chicago member of the Committee, is organizing a special tour from Chicago to the convention, with a stop over at Glacier National Park, and returning through the Canadian Rockies, which members from other sections will be welcome to join. More detailed information on transportation arrangements will be given in later notices from the Committee.—T. J. BRADLEY, *Chairman*.

ABSTRACT SECTION OF THE JOURNAL.

Beginning with this issue of the JOURNAL Pharmaceutical Abstracts will be published in a section near the end of the text pages in 32-page forms. The latter are paged consecutively so that they can be taken out of the JOURNAL and bound at the end of the year. Those who desire may also purchase duplicate forms or obtain bound copies of them.

If a sufficient number of laboratories or individuals desire reprints of the Abstracts, arrangements may be made for furnishing them. Replies should be mailed promptly to the Editor, 2215 Constitution Ave., Washington, D. C.

The Abstracts replace those of the YEAR BOOK and as they are published soon after the articles appear in the pharmaceutical publications, it is hoped that they will add to the service given by the ASSOCIATION. "The Bibliography of Pharmaceutical Research" heretofore published at the conclusion of the Scientific Section will be discontinued.

PAPERS FOR THE SECTIONS OF PORTLAND A. PH. A. MEETING.

Members of the AMERICAN PHARMACEUTICAL ASSOCIATION who contemplate presenting papers at the Portland meeting are referred to page 172 of the February JOURNAL for the names and addresses of officers of the Sections. In sending papers, carbon copies may be addressed to the JOURNAL, 2215 Constitution Ave., Washington, D. C.